

Coaxial Cable Assembly



Coaxial Cable Assembly

ELECTRICAL CHARACTERISTICS:

Part No.	Inner Conductor (mm)	Outer Diameter (mm)	Bending Radius (mm)	Freq(GHz) DC-3	Freq(GHz) DC-6	Freq(GHz) DC-18	Freq(GHz) DC-30	Freq(GHz) DC-40	Connector
03SYV-50-3-1	0.9	5	30	IL≤3.0dB VSWR≤1.4					BNC MaleJ, Q9 MaleJ
06SFF-50-3-1	0.93	4.5	40	IL≤2.0dB VSWR≤1.3	IL≤3.0dB VSWR≤1.4				N,SMA
18SUJ-50-5	1.83	7	45	IL≤0.8dB VSWR≤1.15	IL≤1dB VSWR≤1.2	IL≤1.8dB VSWR≤1.4			N Male
18RG402	1.3	4.2	30	IL≤1.0dB VSWR≤1.15	IL≤1.5dB VSWR≤1.2	IL≤2.6dB VSWR≤1.35			N,SMA
40RG402	1.3	4.2	30	IL≤1.0dB VSWR≤1.15	IL≤1.5dB VSWR≤1.2	IL≤2.6dB VSWR≤1.35			2.92 ,MaleJ
SFT316	0.9	3	20	IL≤1.8dB	IL≤2.2dB VSWR≤1.2	IL≤3.6dB VSWR≤1.25	IL≤4.5dB VSWR≤1.4	IL≤6.5dB VSWR≤1.5	2.92 ,MaleJ
18DLF35	0.94	3.5	14	VSWR≤1.15	VSWR≤1.2	VSWR≤1.35			N,SMA
18DLF50	1.45	5.2	20.5	IL≤0.7dB VSWR≤1.15	IL≤0.9dB VSWR≤1.2	IL≤1.8dB VSWR≤1.35			N,SMA
30DLA36	0.72	3.6	18	IL≤1.0dB VSWR≤1.15	IL≤1.5dB VSWR≤1.2	IL≤2.5dB VSWR≤1.3	IL≤3.2dB VSWR≤1.35	IL≤3.2dB VSWR≤1.35	2.92,SMA, N,SMP, TNC Female
18DLA46	1.02	4.6	23	IL≤0.9dB VSWR≤1.15	IL≤1.2dB VSWR≤1.2	IL≤1.9dB VSWR≤1.3			SMA,N, TNC Female
18DLA52	1.29	3.91	26	IL≤0.7dB VSWR≤1.15	IL≤1.0dB VSWR≤1.2	IL≤1.9dB VSWR≤1.3			SMA,N Male TNC Female
18DLA63	1.57	6.35	32	IL≤0.6dB VSWR≤1.15	IL≤0.8dB VSWR≤1.2	IL≤1.4dB VSWR≤1.3			SMA Famale, N Male, TNC Male
40DLB36	0.91	3.6	18	IL≤0.8dB VSWR≤1.15	IL≤1.3dB VSWR≤1.2	IL≤2.0dB VSWR≤1.3	IL≤2.5dB VSWR≤1.3		2.92,2.4 SMA,SMP
18DLB52	1.45	5.2	25.5	IL≤0.6dB VSWR≤1.15	IL≤1.0dB VSWR≤1.2	IL≤1.3dB VSWR≤1.3			
18DLB80	2.3	7.8	39	IL≤0.4dB VSWR≤1.15	IL≤0.7dB VSWR≤1.2	IL≤1.0dB VSWR≤1.3			SMA,N,TNC 2.92 Male
SFT-50-3	0.99	3.58	40	IL≤0.8dB VSWR≤1.15	IL≤1.0dB VSWR≤1.5	IL≤1.8dB VSWR≤1.4			SMA,N Male
SFT-50-2	0.56	2.18	7	IL≤1.2dB VSWR≤1.15	IL≤1.6dB VSWR≤1.2	IL≤2.8dB VSWR≤1.25	IL≤3.5dB VSWR≤1.3	IL≤4.0dB VSWR≤1.35	2.92,2.4 Male,SMA

Coaxial Calibration Kits



SH-VNACK Coaxial Calibration Kits

ELECTRICAL CHARACTERISTICS:

Part No.	Description	Parameter	Qty
1	Coaxial Termination	Male	1
2	Coaxial Termination	Female	1
3	Coaxial Short Plate	VSWR \geq 60;Male	1
4	Coaxial Short Plate	VSWR $>$ 60; Female	1
5	Coaxial Open	VSWR \geq 60;Male	1
6	Coaxial Open	VSWR $>$ 60;Female	1
7	Precision Transmission Line (Coaxial Air Line)	L= JJ;KK ;JK	3
8	Adaptor	NSJJ:NSKK:NSJK:NSKJ	4
9	Spanner	-	1
10	Packing Case of Aluminum Alloy	-	1

Part No.	Freq Range(GHz)	Connector
SH-30VNACK75N	0-3	N-75
SH-40VNACKN	0-4	N-50
SH-80VNACKN	0-8	N-50
SH-124VNACKN	0-12.4	N-50
SH-180VNACKS	0-18	SMA-50

Coaxial Fixed Attenuator (50Ω)



Series of $P \leq 100W$

ELECTRICAL CHARACTERISTICS:

Part No.	Avg Power Rang(W)	Peak Power(kW)	Freq Range (GHz)	VSWR	Nominal Attenuation(dB)	Connector
SH-400CFA2VJK..	2	0.2	DC-40	≤ 1.35	1-40	2.4mm
SH-420CFA2VJK...	2	0.2	DC-42	≤ 1.35	3,6,10,20,30	2.4mm
SH-500CFA2VJK...	2	0.2	DC-50	≤ 1.55	1-10,20	2.4mm
SH-400CFA5VJK...	5	0.2	DC-40	≤ 1.35	1-40	2.4mm
SH-400CFA10VJK...	10	0.2	DC-40	≤ 1.40	10-40	2.4mm
SH-400CFA20VJK...	20	0.2	DC-40	≤ 1.40	10-40	2.4mm
SH-265CFA2K2.92JK...	2	0.2	DC-26.5	≤ 1.25	1-40	2.92mm
SH-400CFA2K2.92JK...	0.5-2	0.2	DC-40	≤ 1.35	1-40	2.92mm
SH-265CFA5K2.92JK...	5	0.2	DC-26.5	≤ 1.25	1-40	2.92mm
SH-0400CFA5K2.92JK...	5	0.2	DC-40	≤ 1.35	1-40	2.92mm
SH-400CFA10K2.92JK...	10	0.2	DC-40	≤ 1.40	10-40	2.92mm
SH-400CFA20K2.92JK...	20	0.2	DC-40	≤ 1.40	3	2.92mm
SH-400CFA20K2.92JK...	20	0.2	DC-40	≤ 1.40	10-40	2.92mm
SH-400CFA30K2.92JK...	30	0.2	DC-40	≤ 1.40	30	2.92mm
SH-400CFA50K2.92JK...	50	0.5	DC-40	≤ 1.40	30,40	2.92mm
SH-180CFA2TNCJK...	2	0.5	DC-18	≤ 1.60	1-30	TNC
SH-180CFA2TNCK...	2	0.5	DC-18	≤ 1.35	40-90	TNC
SH-180CFA5TNCJK...	5	0.5	DC-18	≤ 1.35	1-30	TNC
SH-180CFA5TNCJK...	5	0.5	DC-18	≤ 1.35	40-90	TNC
SH-180CFA10TNCJK...	10	1	DC-18	≤ 1.35	1-30	TNC
SH-180CFA10TNCJK...	10	1	DC-18	≤ 1.35	40-90	TNC
SH-180CFA25TNCJK...	25	1	DC-18	≤ 1.35	10-40	TNC
SH-180CFA50TNCJK...	50	1	DC-18	≤ 1.35	3-40	TNC
SH-180CFA50TNCJK...	50	1	DC-18	≤ 1.40	10-40	TNC
SH-180CFA100TNCJK...	100	1	DC-18	≤ 1.30	10-40	TNC
SH-180CFA150TNCJK...	150	1	DC-18	≤ 1.40	10-40	TNC
SH-180CFA200TNCJK...	200	1	DC-18	≤ 1.45	10-40	TNC
SH-060CFA104.3/10JK...	10	1	DC-6	≤ 1.50	1-40	4.3/10
SH-060CFA254.3/10JK...	25	1	DC-6	≤ 1.25	1-40	4.3/10
SH-080CFA504.3/10JK...	50	5	DC-8	≤ 1.25	10-40	4.3/10
SH-040CFA1004.3/10JK...	100	5	DC-4	≤ 1.30	20,30,40	4.3/10
SH-060CFA1004.3/10JK...	100	5	DC-6	≤ 1.25	10-40	4.3/10
SH-060CFA1504.3/10JK...	150	5	DC-6	≤ 1.30	10-40	4.3/10
SH-060CFA2004.3/10JK...	200	5	DC-6	≤ 1.30	10-40	4.3/10
SH-265CFA23.5JK...	2	0.5	DC-26.5	≤ 1.25	1-70	3.5mm
SH-265CFA53.5JK...	5	0.5	DC-26.5	≤ 1.25	1-70	3.5mm

Coaxial Fixed Attenuator (50Ω)



Series of P ≤ 100W

ELECTRICAL CHARACTERISTICS:

Part No.	Avg Power Rang(W)	Peak Power(kW)	Freq Range (GHz)	VSWR	Nominal Attenuation(dB)	Connector
SH-265CFA103.5JK...	10	0.5	DC-26.5	≤1.25	1-70	3.5mm
SH-265CFA253.5JK...	25	0.5	DC-26.5	≤1.3	3-70	3.5mm
SH-265CFA503.5JK...	50	0.5	DC-26.5	≤1.3	3-60	3.5mm
SH-180CFA100NJK...	100	0.5	DC-18	≤1.25	3,6,10,20,30,40,50	3.5mm,SMA(M,F), SMK(2.92),N,TNC
SH-265CFA1005JK...	100	0.5	DC-26.5	≤1.40	3,6,10,20,30,40,50	3.5mm, SMA(M,F)SMK(2.92)
SH-0320CFA100SJK...	100	0.5	DC-32	≤1.40	10,20,30,40	SMK(2.92)
SH-124CFA25K...	2	0.2	DC-12.4	≤1.35	1-30	SSMA(M,F)
SH-060CFA2SJK...	2	0.5	DC-6	≤1.20	1-30	SMA(M,F)
SH-124CFA2BMAJK...	10	1	DC-12.4	≤1.40	1-20	BMA
SH-060CFA2QMASMA...	2	0.5	DC-6	≤1.2	1-30	Input QMA
SH-265CFA2SJK...	2	0.5	DC-26.5	≤1.3	1-12	SMA(M,F)
SH-180CFA2SJK...	2	0.5	DC-18	≤1.35	1-30	SMA
SH-180CFA2SK...	2	0.5	DC-18	≤1.30	1-50	SMA
SH-0300CFA25JK...	2	0.5	DC-30	≤1.30	3-30	SMA(M,F)
SH-265CFA25K...	2	0.5	DC-26.5	≤1.35	1-40	SMA
SH-265CFA2SKK...	2	0.5	DC-26.5	≤1.35	1-30	SMA(FF)
SH-265CFA2SJK...	2	0.5	DC-26.5	≤1.40	30-90	SMA(M,F)
SH-265CFA55JK...	5	0.5	DC-26.5	≤1.35	3-50	SMA(M,F)
SH-265CFA105JK...	10	0.5	DC-26.5	≤1.35	3-40	SMA(M,F)
SH-265CFA255JK...	25	1	DC-26.5	≤1.35	10-40	SMA(M,F)
SH-180CFA50NJK...	50	1	DC-18	≤1.25	10-60	-
SH-265CFA505JK...	50	1	DC-26.5	≤1.30	10-60	SMA(M,F,3.5(M,F).SMK(2.92)
SH-320CFA505JK...	50	1	DC-32	≤1.35	10,20,30,40	SMK(2.92)
SH-060CFAZNJK...	2	0.5	DC-6	≤1.25	1-40	N,SMA,TNC,BNC,CC11
SH-180CFA2NJK...	2	0.5	DC-18	≤1.40	1-50	N, TNC
SH-060CFASNJK...	5	0.5	Dc6	≤1.25	1-40	N,5MA,TNCBNC,CC11,L16
SH-180CFASNJK...	5	0.5	DC-18	≤1.40	1-50	N,TNC
SH-040CFA10NJK...	10	1	DC-4	≤1.25	1-40	N, SMA,TNC,BNC
SH-180CFA10NJK...	10	1	DC-18	≤1.40	10-40	N, SMA,TNC
SH-180CFA10NJK...	10	1	DC-18	≤1.30	1-40	N,TNC
SH-124CFA10NK...	10	1	DC-12.4	≤1.30	10-60	N, TNC
SH-040CFA25NJK...	25	1	DC-4	≤1.25	1-50	N, SMA, TNC,BNC,7/16
SH-180CFA25NJK...	25	1	DC-18	≤1.40	10-40	N,TNC,SMA
SH-180CFA25NJK...	25	1	DC-18	≤1.30	10-70	N, TNC
SH-180CFA25NJK...	25	1	DC-18	≤1.40	10-60	N,SMA,TNC
SH-060CFA305JK...	30	1	DC-6	≤1.30	1-40	N,SMA,BNC,7/16

Coaxial Fixed Attenuator (50Ω)



Series of P ≤ 100W

ELECTRICAL CHARACTERISTICS:

Part No.	Avg Power Rang(W)	Peak Power(kW)	Freq Range (GHz)	VSWR	Nominal Attenuation(dB)	Connector
SH-060CFA30NJK...	30	5	DC-6	1.20	3-40	N
SH-100CFA30NJK...	30	5	DC-10	1.20	3-40	N
SH-040CFA50NJK...	50	10	DC-4	1.35	1-40	N,SMA, 7/16,TNC, BNC
SH-040CFA50NJK...	50	10	DC-4	1.35	1-40	N,7/16
SH-100CFA50NJK...	50	5	DC-10	1.35	3-40	N, 7/16
SH-180CFA50NJK...	50	1	DC-18	1.35	3-40	N,SMA
SH-180CFA50NJK...	50	1	DC-18	1.25	10-60	N
SH-180CFA50NJK...	50	1	DC-18	1.35	10-40	N,TNC,SMA
SH-100CFA50NJK...	50	5	DC-10	1.35	3-40	7/16(DC-4),N
SH-040CFA60NJK...	60	10	DC-4	1.35	1-40	N,SMA, 7/16,TNC, BNC
SH-100CFA60NJK...	60	5	DC-10	1.35	3-40	N,7/16
SH-100CFA80NJK...	80	10	DC-10	1.35	10-40	N,7/16,TNC,BNC
SH-180CFA80NJK...	80	1	DC-18	1.40	10-40	N, SMA
SH-100CFA80NJK...	80	5	DC-10	1.40	3-40	N,7/16(DC-2.5)
SH-040CFA100NJK...	100	10	DC-4	1.35	10-50	N, 7/16
SH-040CFA100NJK...	100	5	DC-4	1.25	30	N,7/16
SH-0730CFA100NJK...	100	5	0.7-3	1.20	30,40	N
SH-180CFA100NJK...	100	1	DC-18	1.45	3-50	N
SH-180CFA100NJK...	100	1	DC-18	1.40	3-50	N
SH-180CFA100NJK...	100	1	DC-18	1.40	3-40	N
SH-100CFA100NJK...	100	5	DC-10	1.50	3-40	7/16(DC-4),N
SH-100CFA100NJK...	100	5	DC-10	1.50	3-40	7/16(DC-4),N
SH-0160CFA2NJK...	2-5	0.5	0.1-6	1.30	1-9,10,20,30,40	N
SH-0160CFA10NJK...	10	1	0.1-6	1.30	1-9,10,20,30,40	N
SH-0160CFA25NJK...	25	1	0.1-6	1.30	1-9,10,20,30,40	N
SH-0160CFA50NJK...	50	5	0.1-6	1.30	3/6,10,20,30,40	N
SH-0140CFA100NJK...	100	5	0.1-4	1.25	20,30,40	N
SH-060CFA10QSMAJK...	10	0.5	DC-6	1.20	30	QSMA

Coaxial Fixed Attenuator (50Ω)



Series of $P \leq 500W$

ELECTRICAL CHARACTERISTICS:

Part No.	Avg Power Rang(W)	Peak Power(kW)	Freq Range (GHz)	VSWR	Nominal Attenuation(dB)	Connector
SH-040CFA150NJK...	150	10	DC-4	1.15-1.40	10,20,30,40,50	N,7/16
SH-180CFA150NJK...	150	1	DC-18	1.30-1.45	3,6,10,20,30,40,50	N,SMA
SH-180CFA150NJK...	150	1	DC-18	1.25-1.35	3,6,10,20,30,40,50	N
SH-100CFA150NJK...	150	5	DC-10	1.15-1.50	3,6,10,20,30,40	N,7/16
SH-040CFA200NJK...	200	10	DC-4	1.20-1.40	10,20,30,40,50	N,7/16
SH-100CFA200NJK...	200	5	DC-10	1.15-1.45	10,20,30,40	N,7/16
SH-180CFA200NJK...	200	1	DC-18	1.25-1.50	10,20,30,40,50	N
SH-040CFA250NJK...	250	10	DC-4	1.20-1.40	10,20,30,40,50	N,7/16
SH-050CFA250NJK...	250	10	DC-5	1.15	40	N,7/16
SH-100CFA250NJK...	250	5	DC-10	1.20-1.45	10,20,30,40	N,7/16
SH-100CFA250NJK...	250	5	DC-10	1.20-1.45	10,20,30,40	N,7/16
SH-180CFA250NJK...	250	1	DC-18	1.25-1.55	10,20,30,40,50	N
SH-040CFA300NJK...	300	10	DC-4	1.20-1.50	10,20,30,40,50	N,7/16
SH-180CFA300NJK...	300	1	DC-18	1.20-1.55	10,20,30,40,50	N
SH-100CFA300NJK...	300	5	DC-10	1.25-1.45	30,40,50	N,7/16
SH-130CFA350NJK...	350	1	DC-13	1.30-1.50	6,10,20,30,40	N(J,K)
SH-040CFA350NJK...	350	1	DC-4	1.3	30	N
SH-040CFA400NJK...	400	10	DC-4	1.20-1.50	10,20,30,40,50	N,7/16
SH-100CFA400NJK...	400	5	DC-10	1.25-1.45	40,50	N,7/16
SH-040CFA500NJK...	500	10	DC-4	1.20-1.50	10,20,30,40,50	N,7/16
SH-100CFA500NJK...	500	5	DC-10	1.25-1.45	30,40,50	N,7/16

Coaxial Fixed Attenuator (50Ω)



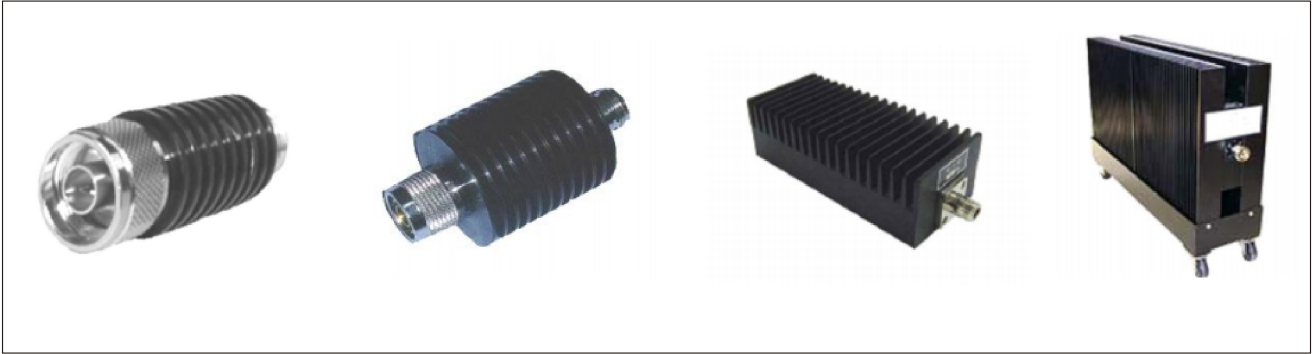
Series of P > 500W

ELECTRICAL CHARACTERISTICS:

Part No.	Avg Power Rang(W)	Peak Power(kW)	Freq Range (GHz)	VSWR	Nominal Attenuation(dB)	Connector
SH-040CHPFA800NJK...	800	10	DC-4	1.20-1.50	40,50,60	N,7/16
SH-060CHPFA1000NJK...	1000	10	DC-6	1.35	50	N,7/16
SH-030CHPFA1000NJK...	1000	10	DC-3	1.40	40,50	N,7/16
SH-030CHPFA1500NJK...	1500	10	DC-3	1.40	40,50	N,7/16
SH-030CHPFA2000NJK...	2000	10	DC-3	1.40	40,50	N,7/16
SH-020CHPFA1000NJK...	1000	50	DC-2	1.20-1.30	30,40,50	N,7/16
SH-020CHPFA1000NJK...	1000	50	DC-2	1.20-1.30	30,40,50	N,7/16
SH-020CHPFA1000NJK...	1000	50	DC-2	1.20-1.30	30,40,50	N,7/16
SH-020CHPFA2000NJK...	2000	50	DC-2	1.20-1.30	30,40,50	N,7/16
SH-020CHPFA2000NJK...	2000	50	DC-2	1.20-1.30	30,40,50	N,7/16
SH-020CHPFA3000NJK...	3000	50	DC-2	1.30	30,40,50	N,7/16
SH-010CHPFA4000NJK...	4000	100	DC-1	1.40	30,40,50	N,7/16
SH-010CHPFA5000NJK...	5000	100	DC-1	1.40	30,40,50	7/16,L36, L52
SH-010CHPFA10000NJK...	10000	100	DC-1	1.40	30,40,50	7/16,L36, L52

COAXIAL FIXED ATTENUATOR

Shinhom Microwave supplies a wide selection of high quality Fixed Attenuators ranging from 2 W to 10 kW in standard Attenuation values of 3, 6, 10, 20, 30, 40 and 50 dB. Please call us with your requirements and discuss your needs with one of our sales engineers.



ELECTRICAL CHARACTERISTICS:

Part No.	Avg Power (W)	Peak Power (kW)	Freq Range (GHz)	VSWR	Nom Attenuation Value(dB)	Coax Connector Type	Impedance (Ω)
SH-180CFA2S1	2	0.5	DC-18	1.15-1.35	1-6,7-8,9-12	SMA	50
SH-180CFA2S2	2	0.5	DC-18	1.15-1.35	1-9,10,20,30	SMA	50
SH-180CFA2S3	2	0.5	DC-18	1.10-1.30	1-9,10,20,30	SMA	50
SH-265CFA2S	2	0.5	DC-26.5	1.10-1.35	1-9,10,20,30	SMA	50
SH-180CFA2S4	2	0.5	DC-18	1.15-1.35	1-9,10,20,30	SMA	50
SH-180CFA3N	3	0.5	DC-18	1.15-1.35	40,50,60,70,80,90	N,SMA,TNC	50
SH-180CFA5S	5	0.5	DC-18	1.15-1.40	3,6,10,20	SMA	50
SH-180CFA10S	10	0.5	DC-18	1.15-1.40	3,6,10,20,30	SMA	50
SH-040CFA2N	2	0.5	DC-4	1.10-1.20	1-9,10,20,30,40	N,BNC,SMA,TNC,L16	50
SH-180CFA2N1	2	0.5	DC-18	1.15-1.35	1-9,10,20,30,40	N,SMA	50
SH-180CFA2N2	2	0.5	DC-18	1.15-1.35	50,60,70,80,90	N,SMA	50
SH-040CFA5N	5	0.5	DC-4	1.10-1.20	1-9,10,20,30,40	N,BNC,SMA,TNC	50
SH-180CFA5N1	5	0.5	DC-18	1.15-1.35	10,20,30,40	N,SMA	50
SH-180CFA5N2	5	0.5	DC-18	1.15-1.35	50,60,70,80,90	N,SMA	50
SH-040CFA10N	10	1	DC-4	1.10-1.20	1-9,10,20,30,40	N,BNC,SMA,TNC,7/16	50
SH-180CFA10N1	10	1	DC-18	1.15-1.35	10,20,30,40	N,SMA	50
SH-180CFA10N2	10	1	DC-18	1.15-1.35	10,20,30,40,50,60,70,80,90	N,SMA,TNC	50
SH-040CFA25N	25	1	DC-4	1.10-1.20	1-9,10,20,30,40,50	N,SMA,TNC,BNC	50
SH-180CFA25N1	25	1	DC-18	1.15-1.35	10,20,30,40	N,SMA,TNC,BNC	50
SH-180CFA25N2	25	1	DC-18	1.10-1.40	10,20,30,40,50,60,70,80,90	N,SMA,TNC,BNC	50
SH-040CFA30N	30	1	DC-4	1.10-1.20	1-9,10,20,30,40	N,SMA,TNC,BNC,7/16	50

ELECTRICAL CHARACTERISTICS:

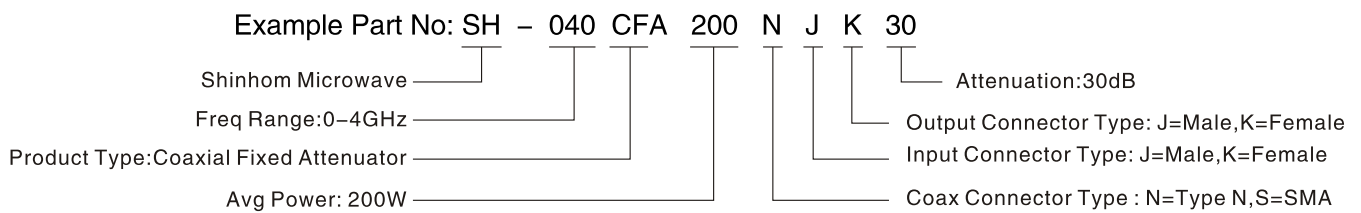
Part No.	Avg Power (W)	Peak Power (kW)	Freq Range (GHz)	VSWR	Nom Attenuation Value(dB)	Coax Connector Type	Impedance (Ω)
SH-040CFA50N1	50	10	DC-4	1.10-1.35	10,20,30,40,50	N,SMA,TNC,BNC,7/16	50
SH-040CFA50N	50	10	DC-4	1.10-1.20	10,20,30,40	N,SMA,TNC,BNC,7/16	50
SH-180CFA50N	50	10	DC-18	1.15-1.35	10,20,30,40	N,SMA,TNC,BNC,7/16	50
SH-100CFA50N1	50	5	DC-10	1.10-1.35	3/6,10,20,30,40	N,7/16	50
SH-100CFA50N2	50	5	DC-10	1.10-1.35	3/6,10,20,30,40	N,7/16	50
SH-040CFA80N	80	10	DC-4	1.10-1.35	10,20,30,40,50	N,7/16,TNC,BNC	50
SH-180CFA80N	80	1	DC-18	1.10-1.45	10,20,30,40	N,SMA	50
SH-100CFA80N	80	5	DC-10	1.10-1.35	3/6,10,20,30,40	N,7/16	50
SH-040CFA100N1	100	10	DC-4	1.10-1.35	10,20,30,40,50	N,7/16	50
SH-180CFA100N	100	1	DC-18	1.20-1.45	10,20,30,40	N,SMA	50
SH-100CFA100N1	100	5	DC-10	1.10-1.35	20,30,40,50	N,7/16	50
SH-040CFA150N	150	10	DC-4	1.15-1.35	10,20,30,40,50	N,7/16	50
SH-180CFA150N	150	1	DC-18	1.20-1.60	30,40	N	50
SH-100CFA150N	150	5	DC-10	1.10-1.35	20,30,40	N,7/16	50
SH-040CFA200N	200	10	DC-4	1.15-1.40	10,20,30,40,50	N,7/16	50
SH-100CFA200N1	200	5	DC-10	1.15-1.45	10,20,30,40,50	N,7/16	50
SH-040CFA250N	250	10	DC-4	1.15-1.40	10,20,30,40,50	N,7/16	50
SH-100CFA250N	250	5	DC-10	1.15-1.45	10,20,30,40	N,7/16	50
SH-040CFA300N1	300	10	DC-4	1.15-1.50	10,20,30,40,50	N,7/16	50
SH-100CFA300N	300	5	DC-10	1.25-1.45	30,40	N	50
SH-040CFA400N	400	10	DC-4	1.20-1.50	10,20,30,40,50	N,7/16	50
SH-080CFA400N	400	5	DC-8	1.25-1.45	40,50	N	50
SH-040CFA500N	500	10	DC-4	1.20-1.50	10,20,30,40,50	N,7/16	50
SH-075CFA500N	500	5	DC-7.5	1.25-1.50	40,50	N	50
SH-040CFA800N	800	10	DC-4	1.20-1.50	40,50,60	N,7/16	50
SH-030CFA1000N	1000	10	DC-3	≤1.40	40,50	N,7/16,L27	50
SH-030CFA1500N	1500	10	DC-3	≤1.40	40,50	N,7/16,L27	50
SH-030CFA2000N	2000	10	DC-3	≤1.40	40,50	N,7/16,L27	50
SH-020CFA1000N	1000	50	DC-2	≤1.30	30,40,50	N,7/16,L27	50
SH-020CFA2000N	2000	50	DC-2	≤1.30	30,40,50	N,7/16,L27	50
SH-020CFA3000N	3000	50	DC-2	≤1.30	30,40,50	N,7/16,L27	50
SH-010CFA4000N	4000	100	DC-1	≤1.40	30,40,50	N,7/16,L27	50
SH-010CFA5000N	5000	100	DC-1	≤1.40	30,40,50	L29,L36,L50	50
SH-010CFA10000N	10000	200	DC-1	≤1.40	30,40,50	L29,L36,L50	50
SH-010CFA1F1	1	0.5	DC-1	≤1.15	10,20,30,40	F,N	75
SH-010CFA1F2	1	0.5	DC-1	≤1.10	1,2,4,8,16,20	F	75
SH-030CFA2N	2	0.5	DC-3	≤1.25	1-9,10,20,30	N,BNC	75
SH-030CFA5N	5	0.5	DC-3	≤1.25	1-9,10,20,30	N,BNC	75

ELECTRICAL CHARACTERISTICS:

Part No.	Avg Power (W)	Peak Power (kW)	Freq Range (GHz)	VSWR	Coax Connector Type	Impedance (Ω)
SH-040CFA50N2	50	10	DC-4	≤1.35	N,SMA	50
SH-040CFA100N2	100	10	DC-4	≤1.40	N,SMA	50
SH-040CFA300N2	300	10	DC-4	≤1.40	N,SMA	50
SH-100CFA50N3	50	10	DC-10	≤1.35	N,SMA	50
SH-100CFA100N2	100	10	DC-10	≤1.40	N,SMA	50
SH-100CFA200N2	200	10	DC-10	≤1.40	N,SMA	50

*Indicates Model Number. See Ordering Information for complete part number.

Ordering Information



Coaxial Rotary Joint



Single Channel Coaxial Rotary Joint

ELECTRICAL CHARACTERISTICS:

Part No.	Freq Range (GHz)	VSWR	IL (dB)	IL WOW (dB)	Avg Power (W)	Peak Power (W)	Connector Type	
							Port 1	Port 2
SH-30CRJINJK	DC-3	≤1.2	≤0.5	≤0.05	30	300	N Male	N Female
SH-80CRJINJK	DC-8	≤1.35	≤0.5	≤0.05	30	300	N Male	N Female
SH-124CRJINJK	DC-12.4	≤.5	≤0.5	≤0.05	30	300	N Male	N Female
SH-124CRJISJK	DC-12.4	≤1.5	≤0.5	≤0.05	30	300	SMA Male	SMA Female
SH-100150CRJISJK	10-15	≤1.5	≤0.5	≤0.1	30	300	SMA Male	SMA Female
SH-180CRJINJK	DC-18	≤1.8	≤0.8	≤0.1	30	300	N Male	N Female
SH-180CRJISJK	DC-18	≤1.8	≤0.8	≤0.1	30	300	SMA Male	SMA Female
SH-400CRJIV	DC-40	≤1.8	≤0.8	≤0.1	30	300	2.4 Female	2.4 Female



Dual Channel Coaxial Rotary Joint (II Type)

ELECTRICAL CHARACTERISTICS:

Part No.	Freq Range (GHz)	VSWR	VSWR WOW (dB)	IL (dB)	IL WOW (dB)	Peak Power (W)	Channel Isolation (dB)	Connector Type
SH-0030CRJIISA	CH1:0-3	≤1.25	≤0.10	≤0.3	≤0.05	10	≥60	SMA Female
	CH2:0-3	≤1.35	≤0.10	≤0.3	≤0.1	10		
SH-0050CRJIIS	CH1:0-5	≤1.20	≤0.05	≤0.3	≤0.05	50W	≥50	SMA Female
	CH2:0-5	≤1.50	≤0.2	≤0.5	≤0.2	10W		

Coaxial Rotary Joint



Dual Channel Coaxial Rotary Joint (UI Type)

ELECTRICAL CHARACTERISTICS:

Part No.	Freq Range (GHz)	VSWR	IL(dB)	Connector Type	Material
SH-0045CRJIISAT	CH1: 0-4.5	1.2	0.25	SMA Female	Al
	CH2: 0-4.5	1.45	0.3		
SH-12CRJUIS1	CH1:0.95-1.45	1.25	0.5	SMA Female	Cu
	CH2: 0.95-1.45	1.50	0.5		
SH-4070CRJUIS	CH1: 3.6-4.2	1.30	0.3	SMA Female	Cu
	CH2:5.85-6.45	1.30	0.3		
SH-160110CRJISA	CH1:DC-16	1.5	0.5	SMA Female	Al
	CH2: DC-11	2.5	2		
SH-94CRJUIS	CH1:9.4+0.25GHz	1.3	0.4	SMA Female	Cu
	CH1:9.4+0.25GHz	1.3	0.4		

Multiple Channels Coaxial Rotary Joint



Part No.:SH-11CHPRJUUI3

ELECTRICAL CHARACTERISTICS:

Part No.	Freq Range (GHz)	VSWR	VSWR WOW (dB)	IL (dB)	IL WOW (dB)	Peak Power (W)	Avg Power (KW)	Connector Type
CH1:	0.13-0.19	≤1.3	≤0.1	≤0.1	≤0.1	30	3.6	1'5/8 Female
CH2:	1-1.1			≤0.2		5	0.05	L27 Female
CH3:	1-1.1			≤0.2		5	0.05	L27 Female

Coaxial Termination



Series of P ≤ 100W

ELECTRICAL CHARACTERISTICS:

Part No.	Avg Power Rang(W)	Peak Power(kW)	Freq Range (GHz)	VSWR	Connector
SH-060CL104.3/10	10	1	DC-6	1.20-1.25	4.3/10
SH-060CL254.3/10	25	1	DC-6	1.20-1.25	4.3/10
SH-080CL504.3/10	50	5	DC-8	1.15-1.30	4.3/10
SH-040CL1004.3/10	100	5	DC-4	1.20-1.25	4.3/10
SH-060CL1004.3/10	100	5	DC-6	1.20-1.30	4.3/10
SH-060CL1504.3/10	150	5	DC-6	1.20-1.30	4.3/10
SH-060CL2004.3/10	200	5	DC-6	1.20-1.30	4.3/10
SH-0500CL2V	2	0.2	DC-50	1.30-1.40	2.4mm
SH-0500CL2V	5	0.2	DC-50	1.30-1.40	2.4mm
SH-0400CL2K2.92	2	0.2	DC-40	1.20-1.25	2.92mm
SH-0400CL5K2.92	5	0.2	DC-40	1.20-1.35	2.92mm
SH-0400CL10K2.92	10	0.2	DC-40	1.25-1.35	2.92mm
SH-0400CL20K2.92	20	0.2	DC-40	1.25-1.35	2.92mm
SH-0265CL23.5K	2	0.5	DC-26.5	1.15-1.20	3.5mm
SH-0265CL53.5K	5	0.5	DC-26.5	1.15-1.20	3.5mm
SH-0265CL103.5K	10	0.5	DC-26.5	1.15-1.25	3.5mm
SH-0265CL253.5K	25	0.5	DC-26.5	1.15-1.25	3.5mm
SH-0265CL503.5K	50	0.5	DC-26.5	1.15-1.25	3.5mm
SH-0265CL1005	100	0.5	DC-26.5	1.30-1.40	3.5mm,SMA,SMK
SH-0180CL25	2	0.25	DC-18	1.15-1.30	SMA
SH-0180CL2SMA(M)	2	0.25	DC-18	1.10-1.35	SMA(M)
SH-0180CL2S	2	0.25	DC-18	1.03-1.20	SMA
SH-060CL1Q	1	0.25	DC-6	1.15-1.20	QMA
SH-0124CL2S	2	0.1	DC-12.4	1.15-1.25	SMA(M) Reverse polarity
SH-0180CL1S	1	0.1	DC-18	1.05-1.30	SMA(M)
SH-0265CL2S	2	0.25	DC-26.5	1.20-1.25	SMA
SH-0265CL5S	5	0.5	DC-26.5	1.10-1.30	SMA,3.5mm,2.92mm
SH-0265CL10S	10	0.5	DC-26.5	1.10-1.30	SMA,3.5mm,2.92mm
SH-0265CL25S	25	1	DC-26.5	1.30	SMA
SH-0265CL50S	50	1	DC-26.5	1.30	SMA

Coaxial Termination



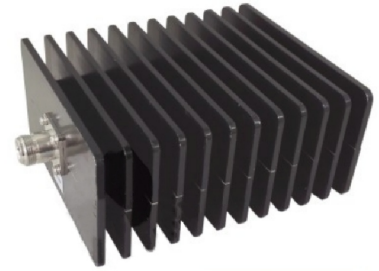
Series of P ≤ 100W

ELECTRICAL CHARACTERISTICS:

Part No.	Avg Power Rang(W)	Peak Power(kW)	Freq Range (GHz)	VSWR	Connector
SH-060CL2N	2	0.5	DC-6	1.15-1.25	N,SMA,BNC,TNC
SH-0180CL2N	2	0.5	DC-18	1.10-1.30	N
SH-030CL27/16(M)	2	1	DC-3	1.10	7/16(M)
SH-080CL2N(M)	2	0.5	DC-8	1.10-1.25	N(M)
SH-0180CL5N	5	0.5	DC-18	1.10-1.30	N
SH-060CL5N	5	0.5	DC-6	1.15-1.25	N,BNC,SMA,TNC,7/16
SH-060CL5N(M)	5	1	DC-6	1.15-1.25	N(M)
SH-0180CL5N	5	0.5	DC-18	1.10-1.30	N
SH-030CL57/16(M)	5	0.5	DC-3	1.10	7/16(M)
SH-060CL10N	10	1	DC-6	1.15-1.20	N,BNC,SMA,TNC
SH-0180CL10N	10	1	DC-18	1.30-1.40	N,SMA
SH-040CL10N	10	1	DC-4	1.15-1.30	N
SH-060CL25S	25	1	DC-6	1.15-1.25	SMA,N,7/16,TNC,BNC
SH-0180CL25S	25	1	DC-18	1.20-1.40	N,SMA
SH-040CL25N	25	1	DC-4	1.15-1.30	N
SH-060CL30N	30	10	DC-6	1.10-1.30	N,SMA,7/16,TNC,BNC
SH-040CL30N	30	1	DC-4	1.15-1.30	N
SH-040CL50N	50	10	DC-4	1.05-1.20	N,SMA,7/16,TNC
SH-060CL50N	50	1	DC-6	1.10-1.25	N,SMA,TNC,BNC
SH-0100CL50N	50	1	DC-10	1.10-1.25	NN
SH-0100CL507/16	50	5	DC-10	1.15-1.35	N,7/16
SH-0180CL50N	50	1	DC-18	1.25-1.40	N,SMA,TNC
SH-0180CL50S	50	5	DC-18	1.15-1.35	N,SMA,TNC
SH-040CL60S	60	1	DC-4	1.05-1.20	N,SMA,7/16
SH-0100CL60N	60	1	DC-10	1.15-1.40	N
SH-040CL80N	80	10	DC-4	1.10-1.25	N,7/16,TNC
SH-0180CL80N	80	1	DC-18	1.20-1.40	N,SMA,TNC
SH-0180CL80S	80	5	DC-18	1.15-1.55	N,SMA
SH-040CL100N	100	10	DC-4	1.10-1.25	N,7/16
SH-0180CL100N	100	5	DC-18	1.25-1.40	N,SMA,TNC
SH-0180CL100TNC	100	5	DC-18	1.25-1.30	N,SMA,TNC
SH-0180CL100S	100	5	DC-18	1.15-1.55	N,SMA
SH-060CL10QS	10	0.5	DC-6	1.20	QSMA

Coaxial Termination

Series of P ≤ 500W



ELECTRICAL CHARACTERISTICS:

Part No.	Avg Power Rang(W)	Peak Power(kW)	Freq Range (GHz)	VSWR	Connector
SH-040CHPL150N	150	10	DC-4	1.15-1.30	N,7/16
SH-0180CHPL150TNC	150	1	DC-10	1.35-1.40	N,TNC
SH-0180CHPL150N	150	10	DC-18	1.25-1.35	N
SH-0100CHPL150N	150	5	DC-10	1.15-1.35	N
SH-0180CHPL150N	150	5	DC-18	1.15-1.55	N
SH-040CHPL200N	200	10	DC-4	1.15-1.30	N,7/16
SH-0180CHPL200N	200	5	DC-18	1.25-1.40	N
SH-0100CHPL200N	200	5	DC-10	1.15-1.35	N,7/16
SH-040CHPL250N	250	10	DC-4	1.15-1.35	N,7/16
SH-0180CHPL250N	250	5	DC-18	1.25-1.40	N
SH-0180CHPL250N	250	5	DC-10	1.15-1.35	N,7/16
SH-0100CHPL250N	250	5	DC-10	1.15-1.35	N,7/16
SH-040CHPL300N	300	10	DC-4	1.15-1.40	N,7/16
SH-0180CHPL300TNC	300	10	DC-18	1.30-1.50	N,TNC
SH-0180CHPL300N	300	5	DC-18	1.15-1.70	N,7/16
SH-040CHPL400N	400	10	DC-4	1.15-1.45	N,7/16
SH-0100CHPL400N	400	10	DC-10	1.15-1.50	N,7/16
SH-040CHPL500N	500	10	DC-4	1.15-1.40	N,7/16
SH-0100CHPL500N	500	5	DC-10	1.15-1.55	N,7/16
SH-20200CHPL500NJ	500	5000	2-20	1.35-1.4	N(J)

Coaxial Termination



Series of P > 500W

ELECTRICAL CHARACTERISTICS:

Part No.	Avg Power Rang(W)	Peak Power(kW)	Freq Range (GHz)	VSWR	Connector
SH-040CHPL800N	800	10	DC-4	1.20-1.45	N,7/16
SH-080CHPL1000N	1000	10	DC-8	1.10-1.55	N
SH-040CHPL1000N	1000	10	DC-4	1.40	N,7/16,L27
SH-040CHPL1500N	1500	10	DC-4	1.40	N,7/16,L27
SH-040CHPL2000N	2000	10	DC-4	1.40	N,7/16,L27
SH-020CHPL1000N	1000	50	DC-2	1.30	N,7/16,L27
SH-020CHPL1000L27	1000	50	DC-2	1.30	N,7/16,L27
SH-020CHPL2000L27	2000	50	DC-2	1.30	N,7/16,L27
SH-020CHPL2000N	2000	50	DC-2	1.30	N,7/16,L27
SH-020CHPL3000L27	3000	50	DC-2	1.50	N,7/16,L27
SH-010CHPL5000L27	5000	100	DC-1	1.40	L27,7/16,L52
SH-010CHPL10000L27	10000	100	DC-1	1.40	L27,7/16,L52

COAXIAL TERMINATION

Shinhom Microwave supplies high quality Coaxial Terminations up to 18 GHz. Our Free Standing Convection Cooled Terminations offer great flexibility for all your engineering applications. Please call us with your requirements and discuss your needs with one of our sales engineers.



ELECTRICAL CHARACTERISTICS:

Part No.	Avg Power (W)	Peak Power (kW)	Freq Range (GHz)	VSWR	Coax Connector Type	Impedance (Ω)
SH-124CL2S	2	0.25	DC-12.4	1.10-1.25	SMA	50
SH-040CL2S	2	0.25	DC-4	≤ 1.20	SMA	50
SH-400CL2S	2	0.25	DC-40	1.10-1.40	SMA	50
SH-180CL2S1	2	0.25	DC-18	1.10-1.30	SMA	50
SH-180CL2S2	2	0.25	DC-18	1.05-1.30	SMA	50
SH-180CL2S3	2	0.5	DC-18	≤ 1.25	SMA	50
SH-400CL5S	5	0.5	DC-40	≤ 1.40	SMA	50
SH-180CL10S	10	0.5	DC-18	≤ 1.45	SMA	50
SH-060CL2N	2	0.5	DC-6	1.10-1.25	N,SMA,BNC,TNC,7/16	50
SH-180CL2N	2	0.5	DC-18	1.10-1.30	N,SMA,BNC,TNC,7/16	50
SH-030CL2	2	1	DC-3	≤ 1.10	7/16(M)	50
SH-080CL2N	2	0.5	DC-8	1.10-1.25	N(M)	50
SH-060CL5N1	5	0.5	DC-6	1.10-1.30	N,SMA,BNC,TNC,7/16	50
SH-060CL2N2	5	1	DC-6	1.10-1.25	N(M)	50
SH-180CL5N1	5	0.5	DC-18	1.10-1.30	N	50
SH-180CL5N2	5	0.5	DC-18	1.10-1.30	N,SMA,BNC,TNC	50
SH-060CL10N	10	1	DC-6	1.10-1.30	N,SMA,BNC,TNC,7/16	50
SH-100CL10N	10	1	DC-10	1.10-1.45	N	50

ELECTRICAL CHARACTERISTICS:

Part No.	Avg Power (W)	Peak Power (kW)	Freq Range (GHz)	VSWR	Coax Connector Type	Impedance (Ω)
SH-180CL10N1	10	1	DC-18	1.10-1.40	N,SMA,BNC,TNC	50
SH-180CL10N2	10	1	DC-18	1.10-1.30	N	50
SH-060CL25N	25	1	DC-6	1.10-1.25	SMA,N,7/16,TNC,BNC	50
SH-100CL25N	25	1	DC-10	1.10-1.45	N	50
SH-180CL25N	25	1	DC-18	1.15-1.35	N,SMA,TNC	50
SH-060CL30N	30	10	DC-6	1.10-1.30	N,SMA,7/16,TNC,BNC	50
SH-100CL30N	30	1	DC-10	1.10-1.45	N	50
SH-040CL50N1	50	10	DC-4	1.05-1.20	N,SMA,7/16,TNC	50
SH-060CL50N	50	1	DC-6	1.10-1.25	N,SMA,7/16,TNC	50
SH-100CL50N	50	1	DC-10	1.10-1.45	N	50
SH-180CL50N1	50	1	DC-18	1.10-1.45	N,SMA	50
SH-180CL50N2	50	5	DC-18	1.10-1.55	N,7/16,SMA	50
SH-040CL80N1	80	10	DC-4	1.05-1.25	N,7/16,TNC	50
SH-180CL80N1	80	1	DC-18	1.15-1.45	N	50
SH-180CL80N2	80	5	DC-18	1.15-1.55	N	50
SH-040CL100N1	100	10	DC-4	1.10-1.25	N,7/16	50
SH-180CL100N1	100	5	DC-18	1.10-1.25	N	50
SH-180CL100N2	100	5	DC-18	1.10-1.55	N	50
SH-040CL150N	150	10	DC-4	1.15-1.30	N,7/16	50
SH-180CL150N1	150	10	DC-18	1.15-1.50	N	50
SH-180CL150N2	150	5	DC-18	1.15-1.55	N	50
SH-040CL200N	200	10	DC-4	1.15-1.30	N,7/16	50
SH-100CL200N	200	5	DC-10	1.10-1.35	N,7/16	50
SH-040CL250N	250	10	DC-4	1.15-1.35	N,7/16	50
SH-100CL25N2	25	5	DC-10	1.10-1.35	N,7/16	50
SH-040CL300N1	300	10	DC-4	1.15-1.40	N,7/16	50
SH-100CL300N	300	5	DC-10	1.10-1.35	N,7/16	50
SH-040CL400N	400	10	DC-4	1.15-1.45	N,7/16	50
SH-100CL400N	400	10	DC-10	1.10-1.50	N,7/16	50
SH-040CL500N1	500	10	DC-4	1.15-1.40	N,7/16	50
SH-040CL500N2	500	5	DC-4	1.15-1.55	N,7/16	50
SH-040CL800N	800	10	DC-4	1.20-1.45	N,7/16	50
SH-040CL1000N	1000	10	DC-4	≤1.40	N,7/16,L27	50
SH-040CL1500N	1500	10	DC-4	≤1.40	N,7/16,L27	50
SH-040CL2000N	2000	10	DC-4	≤1.40	N,7/16,L27	50
SH-020CL1000N	1000	50	DC-2	≤1.30	N,7/16,L27	50
SH-020CL2000N	2000	50	DC-2	≤1.30	N,7/16,L27	50
SH-020CL3000N	3000	50	DC-2	≤1.30	7/16,L27/L36	50
SH-010CL5000N	5000	100	DC-1	≤1.40	7/16,L27/L52	50
SH-030CL1N	1	0.5	DC-3	≤1.20	N,NBC	75
SH-030CL2N	2	0.5	DC-3	≤1.20	N,NBC	75
SH-030CL5N	5	0.5	DC-3	≤1.20	N,NBC	75

ELECTRICAL CHARACTERISTICS:

Part No.	Avg Power (W)	Peak Power (kW)	Freq Range (GHz)	VSWR	Coax Connector Type	Impedance (Ω)
SH-030CL50N	50	5	DC-3	≤1.05	N	50
SH-030CL150N	150	5	DC-3	≤1.05	N	50
SH-085CL30N	30	5	DC-8.5	≤1.30	N,SMA	50
SH-085CL50N3	50	5	DC-18	≤1.55	N,SMA	50
SH-180CL75	75	5	DC-18	≤1.55	N,SMA	50
SH-180CL150N3	150	5	DC-18	≤1.55	N	50
SH-040CL50N2	50	10	DC-4	≤1.30	N	50
SH-040CL100N2	100	10	DC-4	≤1.30	N	50
SH-040CL300N2	300	10	DC-4	≤1.40	N	50
SH-180CL50N4	50	5	DC-18	≤1.55	N	50
SH-180CL100N3	100	5	DC-18	≤1.55	N	50
SH-180CL200N	200	5	DC-18	≤1.55	N	50
SH-0820CL300N	300	5	0.8-2	≤1.20	N	50
SH-0820CL350N	350	5	0.8-2	≤1.20	N	50
SH-1214CL300N	300	12	1.2-1.4	≤1.20	N	50
SH-040CL25N	25	1	DC-4	≤1.20	N	50
SH-040CL30N	30	1	DC-4	≤1.20	N	50
SH-040CL50N3	50	1	DC-4	≤1.20	N	50
SH-040CL80N2	80	1	DC-4	≤1.20	N	50
SH-040CL100N3	100	5	DC-4	≤1.20	N	50

* Indicates Model Number. See Ordering Information for Complete Part number.

Ordering Information

Example Part No: SH - 040 CL 200 N J

